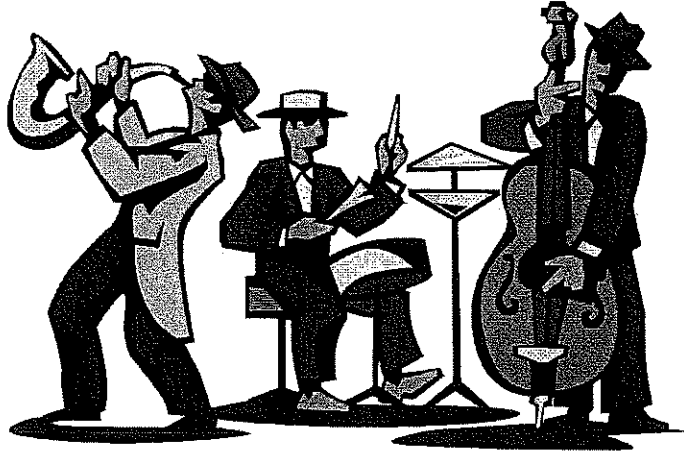


Fisher Middle School



Stage Band Handbook

Mr. Silipino – Director
(609) 538-9800 X8502
psilipino@ewingboe.org

Stage Band Website: <http://www.ewing.k12.nj.us/Page/475>

Introduction

The Fisher Middle School Stage Band is an advanced ensemble that provides students with an opportunity to perform jazz music in a traditional big band setting.

The information that follows is intended to provide students and their parents/guardians with the rules and procedures associated with the ensemble. Completion of this handbook **does not** guarantee membership, but it must be submitted before the audition date.

Prerequisites

To participate in the Stage Band, students must be in good academic standing, follow the Fisher Middle School code of conduct, be an active member of another FMS ensemble (Band/Orchestra/Choir), pass the stage band audition and play an eligible instrument. Eligible instruments include: Saxophone, Trumpet, Trombone, Bass, Guitar, Drum Set and Piano.

Audition Process

All potential stage band students must pass an audition to gain membership to the ensemble. Audition materials will be distributed to students two weeks before the audition date. Once the students receive their audition packets, it is their responsibility to sign up for an audition time with Mr. Silipino in the band room. To maintain fairness, all auditions must be completed on **October 8th, 2019**. **There will be no exceptions.** If a student cannot make their chosen audition time, they will automatically forfeit their chance to be accepted into the ensemble.

Rehearsal and Performance Attendance

The Fisher Stage Band generally rehearses on Tuesday nights from 7:00PM to 9:00PM. Special rehearsals occur before the winter and spring concert and are noted on the rehearsal schedule.

Students are expected to arrive early so that they are ready to play by 7:00PM. Habitual tardiness will result in disqualification from the Stage Band. Parents and guardians are expected to pick up their student on time at 9:00PM.

All rehearsals and performances are mandatory. When a student is absent from school, he or she will be excused from a rehearsal or performance. In case of an emergency, students must call or send an email to Mr. Silipino prior to the start

time of the rehearsal or performance and submit a parent/guardian note. All other absences will be considered unexcused.

Unexcused absences

All unexcused absences will result in the following consequences:

- **The first unexcused absence will result in a verbal warning and a phone conference with the student's parent or guardian.**
- **The second unexcused absence will result in disqualification from the stage band.**

Home Practice

At the end of each stage band rehearsal, each student will receive a practice related homework assignment. Students are expected to practice and complete their homework assignments each week. Failure to do so will result in disqualification from the stage band.

Behavior

Even though the Stage Band rehearses after school, all students are expected to follow the Fisher code of conduct. Any incident that violates the Fisher code of conduct will not be tolerated and will result in the immediate disqualification from the Stage Band.



Stage Band Permission Form

I have read all of the information contained in this handbook and understand that I must adhere to all of the terms of membership. I acknowledge that failure to do so will result in my dismissal from the FMS Stage Band.

Student's Name (Please Print): _____

Student's Signature: _____

I have read and discussed the terms of membership with my student. I will accept responsibility for seeing that my student arrives and is picked up in a punctual manner.

Parent or Guardian's Signature: _____

Primary Contact Number: _____

Primary Email: _____

Stage Band Rehearsal Schedule

Date:	Time:
Tuesday, 10/15	7:00pm - 9:00pm
Tuesday, 10/22	7:00pm - 9:00pm
Tuesday, 10/29	7:00pm - 9:00pm
<u>Monday, 11/4</u>	7:00pm - 9:00pm
Tuesday, 11/12	7:00pm - 9:00pm
Tuesday, 11/19	7:00pm - 9:00pm
Tuesday, 11/26	7:00pm - 9:00pm
Tuesday, 12/3	7:00pm - 9:00pm
<u>Monday, 12/9</u>	7:00pm - 9:00pm
Tuesday, 12/17	7:00pm - 9:00pm
Tuesday, 1/7	7:00pm - 9:00pm
<u>Monday, 1/13</u>	7:00pm - 9:00pm

Winter Concert: Tuesday, January 14th

Winter Concert Snow Date: Tuesday January 22nd

Stage Band Rehearsal Schedule

Date:	Time:
<u>Monday, 1/27</u>	7:00pm - 9:00pm
Tuesday, 2/4	7:00pm - 9:00pm
Tuesday, 2/11	7:00pm - 9:00pm
Tuesday, 2/18	7:00pm - 9:00pm
Tuesday, 2/25	7:00pm - 9:00pm
<u>Monday, 3/2</u>	7:00pm - 9:00pm
Tuesday, 3/10	7:00pm - 9:00pm
Tuesday, 3/17	7:00pm - 9:00pm
Tuesday, 3/24	7:00pm - 9:00pm
Tuesday, 3/31	7:00pm - 9:00pm
Tuesday, 4/14	7:00pm - 9:00pm
Tuesday, 4/21	7:00pm - 9:00pm
<u>Monday, 4/27</u>	7:00pm - 9:00pm
Tuesday, 5/5	7:00pm - 9:00pm
<u>Friday, 5/8 FPA Pasta Dinner</u>	tba
<u>Monday, 5/11</u>	7:00pm - 9:00pm
Tuesday, 5/12	7:00pm - 9:00pm

Spring Concert: Wednesday, May 13th

SAXOPHONE

2017 - 2018 STAGE BAND AUDITION

G BLUES SCALE



Musical notation for the G Blues Scale in G major, 4/4 time. The scale consists of the notes G, A, B, C, D, E, F, G. The notation shows a single line of music with a treble clef and a key signature of one sharp (F#).

5 D BLUES SCALE



Musical notation for the D Blues Scale in D major, 4/4 time. The scale consists of the notes D, E, F, G, A, B, C, D. The notation shows a single line of music with a treble clef and a key signature of two sharps (F# and C#).

9 "WATERMELON MAN"



Musical notation for the first line of "Watermelon Man" in D major, 4/4 time. The notation shows a single line of music with a treble clef and a key signature of two sharps (F# and C#). The melody starts with a quarter rest followed by eighth notes.



Musical notation for the second line of "Watermelon Man" in D major, 4/4 time. The notation shows a single line of music with a treble clef and a key signature of two sharps (F# and C#). The melody continues with eighth and quarter notes.



Musical notation for the third line of "Watermelon Man" in D major, 4/4 time. The notation shows a single line of music with a treble clef and a key signature of two sharps (F# and C#). The melody continues with eighth and quarter notes, including accents and slurs.



Musical notation for the fourth line of "Watermelon Man" in D major, 4/4 time. The notation shows a single line of music with a treble clef and a key signature of two sharps (F# and C#). The melody continues with eighth and quarter notes, including accents and slurs.

TROMBONE

2017 - 2018 STAGE BAND AUDITION

B \flat BLUES SCALE

Musical notation for the B \flat Blues Scale, starting at measure 1. The scale is written in bass clef, 4/4 time, with a key signature of two flats (B \flat and E \flat). The notes are: B \flat , A, G, F, E \flat , D, C, B \flat .

5

F BLUES SCALE

Musical notation for the F Blues Scale, starting at measure 5. The scale is written in bass clef, 4/4 time, with a key signature of two flats (B \flat and E \flat). The notes are: F, E \flat , D, C, B \flat , A, G, F.

9

"WATERMELON MAN"

Musical notation for the piece "Watermelon Man", starting at measure 9. The piece is written in bass clef, 4/4 time, with a key signature of two flats (B \flat and E \flat). The melody features eighth and quarter notes with slurs and accents.

12

Musical notation for the continuation of "Watermelon Man", starting at measure 12. The melody continues with eighth and quarter notes, including slurs and accents.

17

Musical notation for the continuation of "Watermelon Man", starting at measure 17. The melody continues with eighth and quarter notes, including slurs and accents.

21

Musical notation for the continuation of "Watermelon Man", starting at measure 21. The melody continues with eighth and quarter notes, including slurs and accents.

TRUMPET

2017 - 2018 STAGE BAND AUDITION

C BLUES SCALE



5

G BLUES SCALE



9

"WATERMELON MAN"



12



15



19



PIANO

2017 - 2018 STAGE BAND AUDITION

8 \flat BLUES SCALE

8 \flat BLUES SCALE

5 F BLUES SCALE

F BLUES SCALE

9 "WATERMELON MAN"

"WATERMELON MAN"

12

12

17

17

21

21

GIUITAR

2017 - 2018 STAGE BAND AUDITION

B \flat BLUES SCALE



5 F BLUES SCALE




9 E \flat 7 



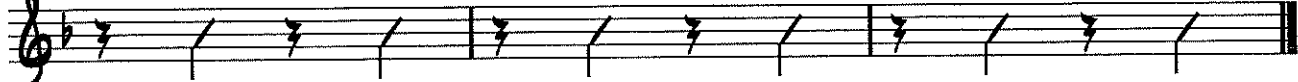
12 A \flat 7 



18 C \flat 7  B \flat 7  G \flat 7  A \flat 7 



22 E \flat 7 



BASS GUITAR

2017 - 2018 STAGE BAND AUDITION

B \flat BLUES SCALE



5

F BLUES SCALE



9

"WATERMELON MAN"



12



17



21



PERCUSSION

2017 - 2018 STAGE BAND AUDITION

SWING BEAT

Musical notation for the first system of the Swing Beat. It consists of two staves. The top staff is a snare drum line with a 4/4 time signature, showing a pattern of quarter notes with 'x' marks above them. The bottom staff is a bass drum line with a 4/4 time signature, showing a pattern of quarter notes.

5

Musical notation for the second system of the Swing Beat, starting at measure 5. It consists of two staves with the same snare and bass drum patterns as the first system.

9

ROCK BEAT

Musical notation for the first system of the Rock Beat, starting at measure 9. It consists of two staves. The top staff is a snare drum line with a 4/4 time signature, showing a pattern of eighth notes with 'x' marks above them. The bottom staff is a bass drum line with a 4/4 time signature, showing a pattern of quarter notes.

12

Musical notation for the second system of the Rock Beat, starting at measure 12. It consists of two staves with the same snare and bass drum patterns as the first system.

15

Musical notation for the third system of the Rock Beat, starting at measure 15. It consists of two staves with the same snare and bass drum patterns as the first system.

17

LATIN (BOSSA) BEAT

Musical notation for the first system of the Latin (Bossa) Beat, starting at measure 17. It consists of two staves. The top staff is a snare drum line with a 4/4 time signature, showing a pattern of eighth notes with 'x' marks above them. The bottom staff is a bass drum line with a 4/4 time signature, showing a pattern of quarter notes.

21

Musical notation for the second system of the Latin (Bossa) Beat, starting at measure 21. It consists of two staves with the same snare and bass drum patterns as the first system.

